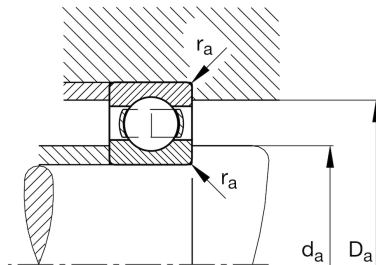
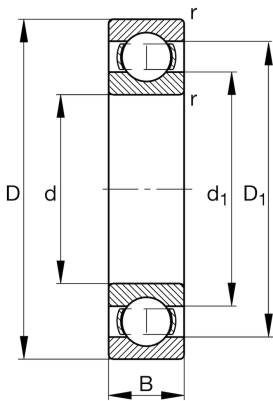


**FAG****626**

Deep groove ball bearing

Schaeffler ID:
0383909490000Deep groove ball bearing 62, single row,
steel sheet metal cage

Technical information



Main Dimensions & Performance Data

d	6 mm	Bore diameter
D	19 mm	Outside diameter
B	6 mm	Width
C_r	2,614 N	Basic dynamic load rating, radial
C_{0r}	1,053 N	Basic static load rating, radial
C_{ur}	55 N	Fatigue load limit, radial
n_G	53,000 1/min	Limiting speed
n_{gr}	30,500 1/min	Reference speed
	8 g	Weight

Dimensions

r_{min}	0.3 mm	Minimum chamfer dimension
D_1	15.02 mm	Shoulder diameter outer ring
d_1	10.12 mm	Shoulder diameter inner ring

Mounting dimensions

$d_{a min}$	8.4 mm	Minimum diameter shaft shoulder
$D_{a max}$	16.6 mm	Maximum diameter of housing shoulder
$r_{a max}$	0.3 mm	Maximum fillet radius

Calculation factors

f_0	12.3	Calculation factor
-------	------	--------------------

Temperature range

T_{min}	-30 °C	Operating temperature min.
T_{max}	120 °C	Operating temperature max.